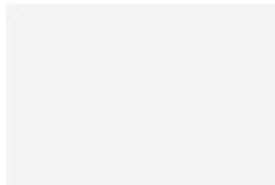


SCHEDULE OF EXTERNAL FINISHES

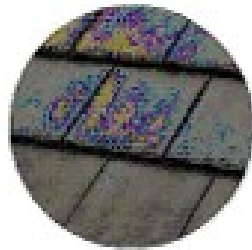
Alterations and Additions to Façade &

Rear Bathrooms and Laundries

(44 Rea Street, GREENACRE)



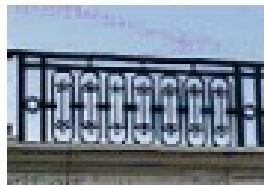
GARAGE DOOR
B&D PANELIFT,
COLORBOND
'DOVER WHITE'
OR SIMILAR



CONCRETE TILES
ROOFING
'SOHO NIGHT'
OR SIMILAR



DULUX
NATURAL WHITE
OR SIMILAR
CEMENT RENDER
EXTERNAL WALL FINISH



WROUGHT IRON
BALUSTRADE



ALUMINIUM
FRAMED WINDOWS
& DOORS FRAME,
BLACK